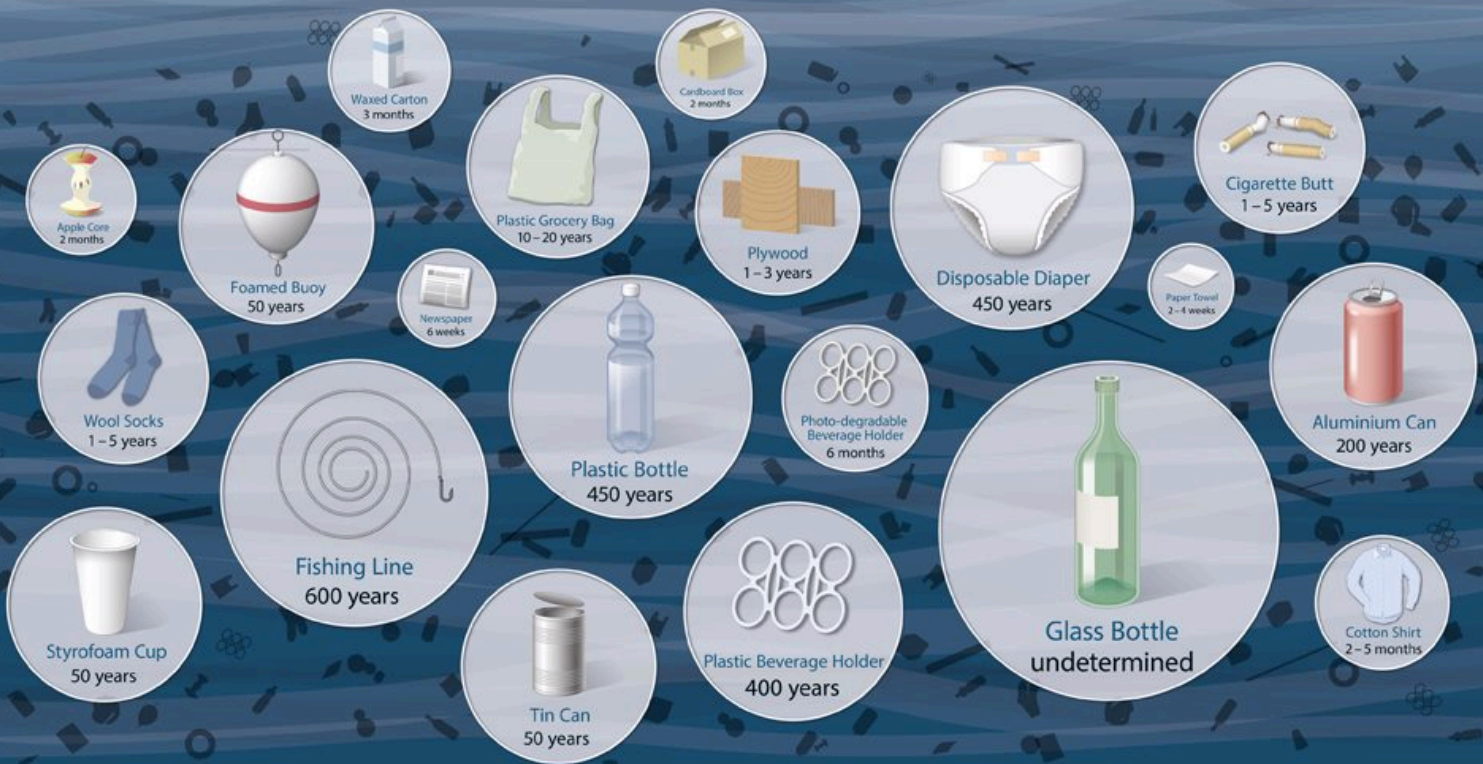


HOW LONG UNTIL IT'S GONE?

Estimated decomposition rates of common marine debris items



Estimated individual item timelines depend on product composition and environmental conditions.

Source: NOAA (National Oceanic and Atmospheric Administration), US / Woods Hole Sea Grant, US
Graphics: Oliver Lude / Museum für Gestaltung Zürich, ZHdK