

Dot Plots and Temperature

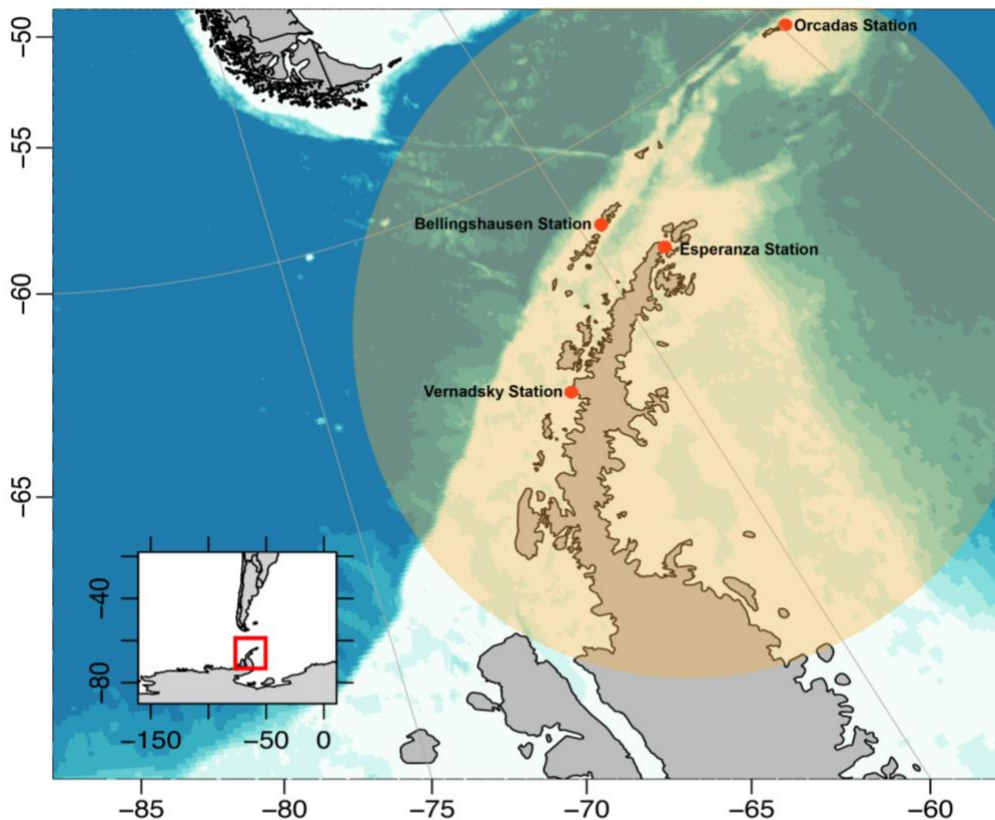
Student Packet (English)

Throughout this assignment, we will be trying to answer the following questions.

What is the average temperature in Antarctica?

Have these temperatures changed over time?

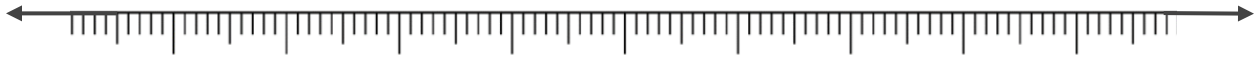
You will be provided with temperatures over a period of time. These temperatures have been collected from the scientific bases shown in the image below.



Year	Station	Avg Temperature (C)	Avg Temperature (F)
1976	Faraday	-5	23
1976	Esperanza	-5.1	22.8
1976	Orcadas	-3.2	26.2
1976	Bellingshausen	-2.7	27.1
1996	Faraday	-2.2	28
1996	Esperanza	-4.2	24.4
1996	Orcadas	-2.7	27.1
1996	Bellingshausen	-1.3	29.7
2016	Faraday	-2.9	26.9
2016	Esperanza	-2.5	27.5
2016	Orcadas	-3	26.6
2016	Bellingshausen	-1.6	29.1

1. What are the four different locations where this data was collected?
2. Will four locations give us an accurate representation of the temperature in Antarctica? Why or why not? Why do you think you are only given four locations?
3. Which year had the lowest average temperature? What was that temperature?
4. Which year had the highest average temperature? What was that temperature?
5. Before creating a dot plot or calculating the averages, do you believe that there has been a temperature change in Antarctica? Why or why not?

Create a Dot Plot of all temperatures given to us in Celsius

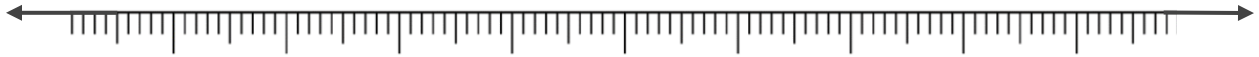


Create a Dot Plot of all the temperatures given to us in Fahrenheit



6. Do you notice any clusters of data? (An interval with multiple data points)

Create a Dot Plot of the temperatures from 1976
(You may choose to do Celsius or Fahrenheit)



Create a Dot Plot of the temperatures from 1996
(You must use the same measurements as you did above)



Create a Dot Plot of the temperatures from 2016
(You must use the same measurements as you did above)

